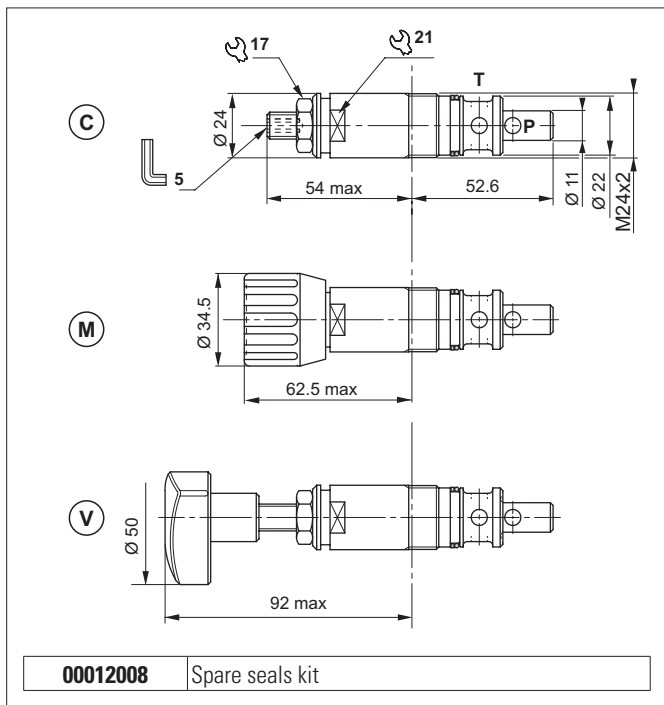


DIRECT ACTING PRESSURE RELIEF VALVES

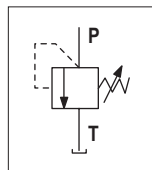


The direct acting relief valve limits the pressure in a hydraulic circuit. It raises the safety level by making it impossible for the plant operators to set a higher pressure rating, than that specified in the catalogue. This is limited by a pack spring with a mechanical stop, which prevents temporary P closures caused by pressure peaks. It has a galvanised steel body. The guided ball poppet is in tempered and ground steel.

HYDRAULIC FEATURES

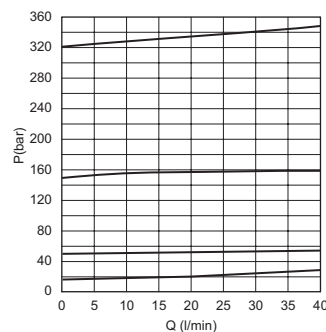
Max. opening pressure	320 bar
Setting range:	
Spring 1 (orange)	max 15 bar
Spring 1 (white)	max 50 bar
Spring 2 (yellow)	max 150 bar
Spring 3 (green)	max 320 bar
Max. Flow	40 l/min
Hydraulic fluid	DIN 51524 Mineral oils
Fluid viscosity	10 ÷ 500 mm ² /s
Fluid temperature	-25°C ÷ 75°C
Ambient temperature	-25°C ÷ 60°C
Max. contamin. level class with filter	ISO 4406:1999 - class 19/17/14
Weight	0.2 kg
Tightening torque	60 ÷ 70 Nm
Cavity (M24x2)	CN051001 (See section 15)

HYDRAULIC SYMBOL

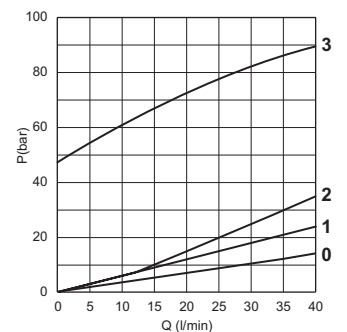


The minimum permissible setting pressure depending on the spring: see curves below

PRESSURE-FLOW RATE



MIN. SETTING PRESSURE



0 = CMP10.0.. - 1 = CMP10.1.. - 2 = CMP10.2.. - 3 = CMP10.3..
Fluid used: mineral based oil with viscosity 32 mm²/s at 40°C.

ORDERING CODE

